

FLAGSTONE PAVERS®

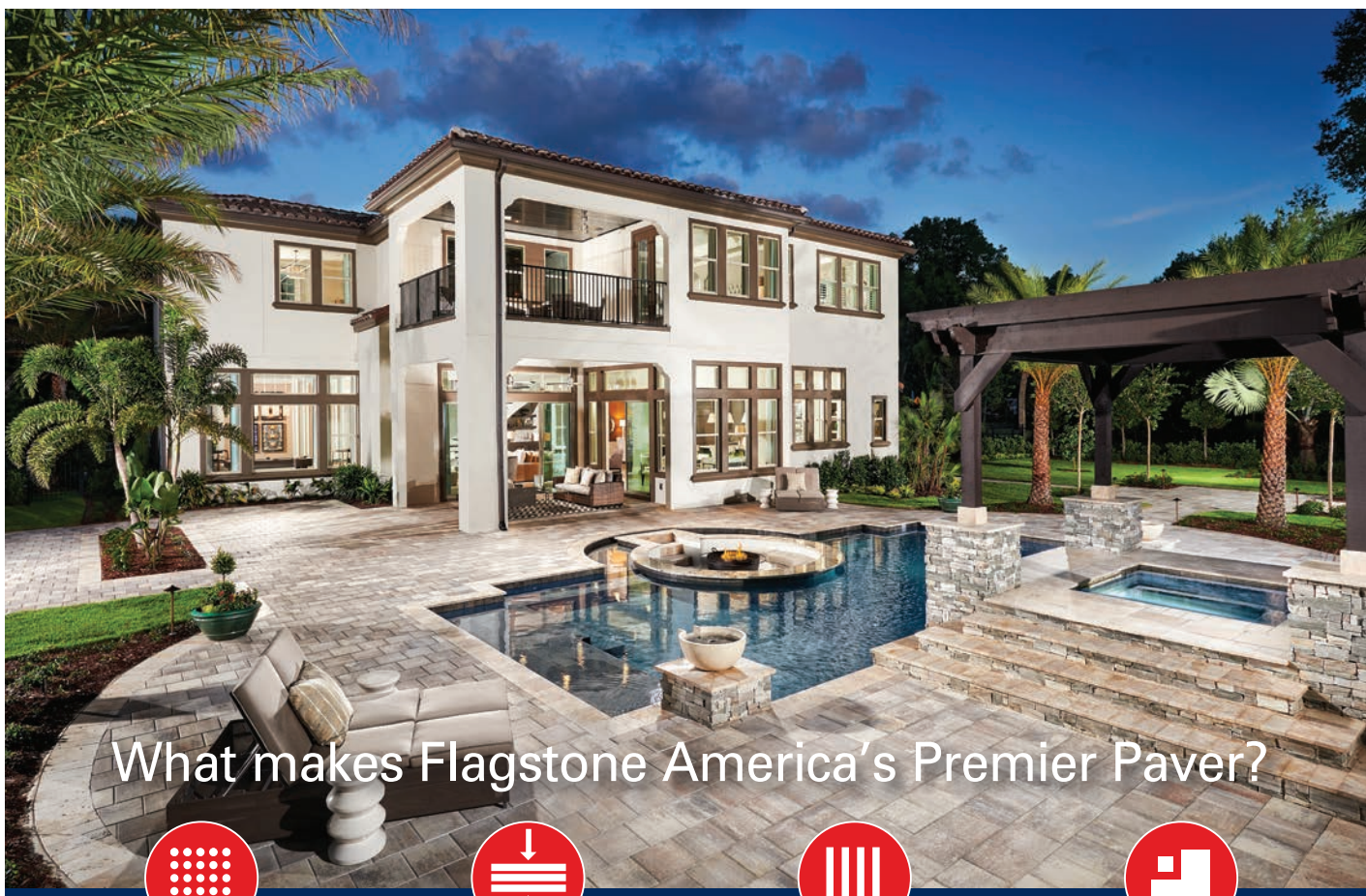
QUALITY & STRENGTH INTERLOCKED

Product Catalog Vol. XXII



flagstonepavers.com





What makes Flagstone America's Premier Paver?



MATERIAL

Flagstone Pavers meet or exceed the ASTM C-936, standard specifications for solid interlocking concrete paving units. We have the best multi-color blending system in the market today. Our innovative full-color through process, creates the strongest possible product, while maintaining a smooth concrete surface. So you get the best of both worlds. All with an unsurpassed warranty.



DENSITY

Flagstone Pavers has developed a revolutionary color-through batch design that provides optimum strength and durability — without the problems often encountered in the veneer process offered by other manufacturers.

This innovative system eliminates separation between the surface and base material and stops premature wear.



CONSISTENCY

Flagstone Pavers' renowned batch design continues to set the standard for the industry.

While other paver manufacturers may also use the color-through process, many do not add sand and properly adjust their cement and color loadings, which can result in the color looking faded compared to Flagstone's products.



SERVICE

We are committed to providing outstanding service.

With our architectural design guide, photo gallery, and sample boards, you'll find it easy to select the right paver solution for your project. And our comprehensive website puts all of our resources at your fingertips.

Cover Photo: Pavers: Traverstone in White / Pewter & Freedom border in Gray / Charcoal | Walls: Stonegate® bench & fire pit kit in Gray / Charcoal



FLAGSTONE PAVERS®

QUALITY & STRENGTH INTERLOCKED



TABLE OF CONTENTS

5 5 Priority Stock Program	04
Gallery	05
Product Guide	08
Single Pavers	09
CityStone™ Demi	10
Heritage	10
Union	11
Traverstone	11
Castlerock III	12
Eco-CityLock®	12
Coping.....	13
Stonegate®	14
Munich Wall	15
Fire Pit Brick	15
Rumblestone®	16
Flagstone Color Matrix	17
Color Guide	18





FLAGSTONE PAVERS®
QUALITY & STRENGTH INTERLOCKED

Paving the way to your American dream...



Cream / Beige / Charcoal



Cream / Orange / Pewter



Gray / Charcoal



White / Pewter



White / Tan / Charcoal

5Products | **5**Colors | Priority Stock Program

Freedom (p. 9), Heritage (p. 10), CityStone™ Demi (p. 10), Union (p. 11) and, Traverstone (p. 11)

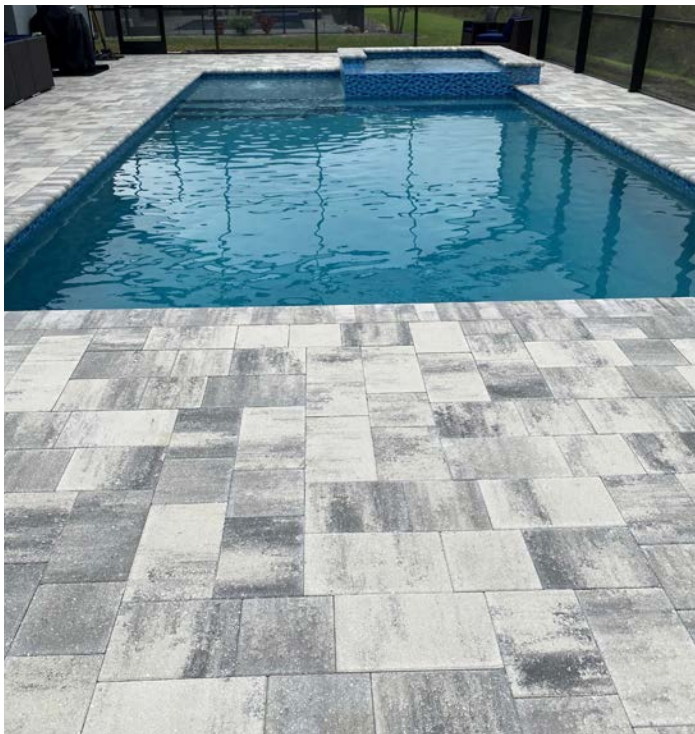
See your hardscape representative for details.

Our revolutionary color-blending system gives you the most vibrant pavers available in the market today. We use only the finest quality materials available from Florida mines resulting in a paver with a smoother, harder surface providing enhanced durability and strength. Our commitment to outstanding service separates us from the rest.

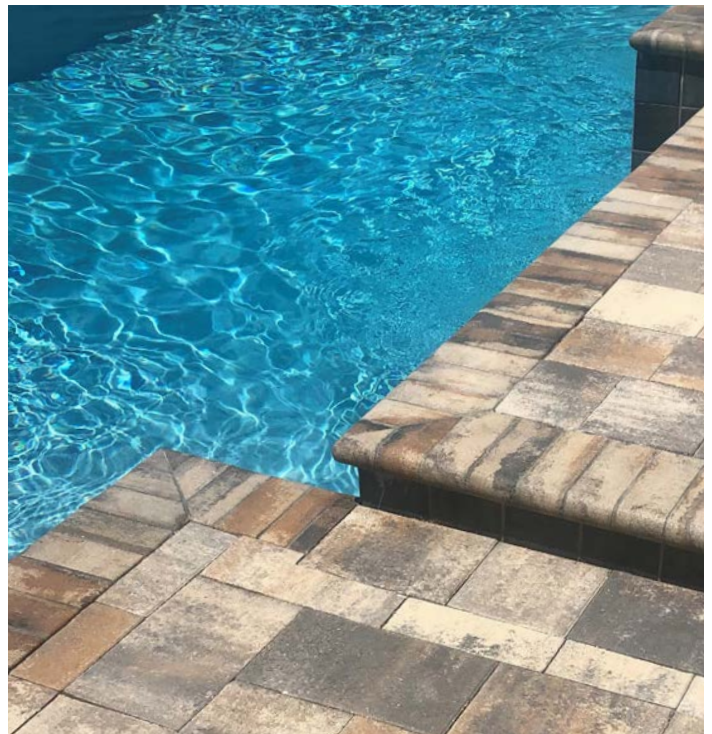




Union in White / Tan / Charcoal in Random Pattern & Munich Wall and Cap



Traverstone and Coping in White / Pewter Random Pattern Paver



Traverstone and Coping in Cream / Beige / Charcoal



GALLERY



Heritage in White / Tan / Charcoal & Freedom in Charcoal, Random Pattern



Old Glory in Cream / Beige / Charcoal, Herringbone Pattern



Traverstone in Indian Summer, Random Pattern



Union in Gray / Charcoal & Freedom border in Charcoal, Running Bond Pattern



Supreme in Cream / Beige, Running Bond Pattern



CityStone™ in White / Pewter, Random Pattern



CityStone™ Demi & Coping in Cream / Beige / Charcoal, Random Pattern



SINGLE PAVERS



FREEDOM

Unit Size

4" x 8"

Thickness: 30mm, 60mm, 80mm



Freedom in Cream / Beige / Charcoal, Herringbone Pattern



COMMONWEALTH

Unit Size

8" x 8"

Thickness: 60mm



Independence in Cream / Beige, Herringbone Pattern



INDEPENDENCE

Unit Size

8" x 12"

Thickness: 60mm



OLD GLORY

Unit Size

12" x 18"

Thickness: 60mm



Monument in White / Tan / Charcoal, Commonwealth in White & Tan



MONUMENT

Unit Size

11" x 8" x 4"

Thickness: 60mm



LIBERTY

Unit Size

12" x 12"

Thickness: 30mm, 60mm



Supreme in Cream / Orange / Pewter, Running Bond Pattern



SUPREME

Unit Size

16" x 16"

Thickness: 60mm



CITYSTONE™ Demi



Unit Sizes

4" x 8"

8" x 8"

8" x 12"

Thickness: 30mm, 60mm



CityStone™ Demi in Cream / Beige / Charcoal, Random Pattern

HERITAGE

Embossed surface gives a slate like appearance. Softened edges create the natural look of weathered flagstone.



Unit Sizes

4½" x 8⅞"

8⅞" x 8⅞"

8⅞" x 13⅜"

Thickness: 30mm, 60mm



Heritage in White / Tan / Charcoal, Random Pattern



UNION



Unit Sizes

6" x 6"

6" x 9"

Thickness: 30mm, 60mm



Union in Gray / Charcoal, T-Pattern

TRAVERSTONE

Softened edges create the natural look of weathered flagstone.



Unit Sizes

9" x 9"

9" x 12"

9" x 15"

Thickness: 30mm, 60mm



Traverstone in White / Pewter, Random Pattern



CASTLEROCK III

Pillow top surface



Unit Sizes

4 5/8" x 6 1/4"

6 1/4" x 6 1/4"

6 1/4" x 9 1/4"

Thickness: 30mm, 60mm



Castlerock III in White / Pewter, Random Pattern

ECO-CITYLOCK®

Permeable paver



Unit Sizes

4" x 8"

Thickness: 60mm



Eco-CityLock® in White / Pewter, Herringbone Pattern



BULLNOSE COPING

Used for pool coping or step coping during new applications and replacement applications.



Unit Size

3⁵/₈" x 9¹/₈"

Thickness: 60mm



Bullnose Coping in White / Pewter, Step Application

REMODEL COPING

Remodel Coping can be used for pool coping or step coping to overlay existing hard surfaces.

Available in 2³/₄" Long, 4" Long

2³/₄" Long



4" Long



2³/₄" Remodel Coping, Cream / Orange / Pewter



4" Remodel Coping, White / Tan / Charcoal



PRODUCT GUIDE

STONEGATE®

Stonegate combines an elegant weathered stone appearance with almost endless design possibilities. This versatile retaining wall system allows for the easy creation of gravity retaining walls up to 3-feet in height, free-standing walls, and outdoor living elements such as kitchens, fireplaces, fire pits, benches and more.



LARGE

Width	Depth	Height
16"/14"	10"	6"



MEDIUM

Width	Depth	Height
12"/10"	10"	6"



SMALL

Width	Depth	Height
6"/4"	10"	6"



CAP

Width	Depth	Height
12"/10"	11"	3"



Stonegate® in Cream / Beige / Charcoal



Stonegate® in Gray / Charcoal



Stonegate® Grill Station in Gray / Charcoal



MUNICH WALL

Munich Wall offers an easy, cost-effective solution for smaller walls and columns. Product can be dry stacked or mortar set.



Width	Depth	Height	Weight
12"	8"	4"	25 lbs



Munich Wall in Cream / Beige / Charcoal

FIRE PIT BRICK

Fire pits will bring beauty and ambiance to any outdoor living space and will provide years of pleasure to you and your family. Fire pit kit available in 4 layers as pictured.

Blue stone not included with kit.



Width	Depth	Height	Weight
10" / 7"	8"	4"	15 lbs



Fire Pit Brick in Gray / Charcoal



RUMBLESTONE®

Flagstone's innovative RumbleStone® provides a set of rustic building blocks for your outdoor hardscape projects. Simple to complex, large or small, the possibilities for creative expression are as far and wide as your imagination. The six tumbled RumbleStone® sizes modulate in all dimensions and can be assembled in a variety of configurations and orientations. In addition to simple running bond patterns, the stones can be easily stacked with insets, moved forward and backward, horizontally and vertically, for more aesthetically pleasing visual relief and texture. Also, the 3.5-inch base module works with common dimension lumber for benches and pergola posts. Stack'em up and bond with construction adhesive.



RumbleStone® Bench and Fire Pit in Café



SQUARE

Width	Depth	Height
7"	7"	1¾"



MINI

Width	Depth	Height
3½"	7"	1¾"



RECTANGLE

Width	Depth	Height
10½"	7"	1¾"



LARGE

Width	Depth	Height
10½"	7"	3½"



MEDIUM

Width	Depth	Height
7"	7"	3½"



TRAPEZOID

Width	Depth	Height
10¼" / 6½"	7"	3½"

FLAGSTONE COLOR MATRIX



The availability of colors in certain shapes may change. Minimum square footage requirements may apply. Please refer to our current Product Color Run Sheet on www.flagstonepavers.com before making your selections.

PAVER COLORS		White	Cream	Beige	White/Tan	White/Pewter	Cream/Beige	Cream/Tan	White/Tan/Charcoal	Cream/Orange/Pewter	Cream/Beige/Charcoal	Cream/Orange/Brown	Gray/Charcoal	Red/Charcoal	Tan/Charcoal	Red/Tan/Charcoal	Indian Summer	Tan	Pewter	Charcoal	Café	
		WHITE CEMENT BASED											GREY CEMENT BASED									
PAVERS																						
SINGLE PAVERS	Freedom	X	X	X	X	X	X	X	X	X	X	X	X	X	X	X	X	X	X	X	X	
	Commonwealth		0	0		0	0		0	0	0							0				
	Independence					0	0		0	0	0											
	Old Glory	0	0		0	0	0		0	0	0											
	Monument					0	0		0	0	0											
	Liberty					X	X		X	X	X											
	Supreme					X	X		X	X	X											
	Heritage				X	X	X	X	X	X	X	X	X	X	X	X	X	X				
	Union				X	X	X	X	X	X	X	X	X	X	X	X	X	X				
	Castlerock III				X	X	X	X	X	X	X	X	X	X	X	X	X	X				
	Traverstone				X	X	X	X	X	X	X	X	X	X	X	X	X	X				
	Eco-CityLock®					0			0	0	0		0									
	CityStone™ Demi				X	X	X	X	X	X	X	X	X					X				
COPING																						
	Bullnose Coping	X	X		X	X	X		X	X	X							X		X		
	Remodel Coping	X	X		X	X	X		X	X	X							X		X		
WALLS																						
	Stonegate® Wall & Cap						X		X		X		X									
	Munich Wall						X		X		X		X									
	Fire Pit Brick						X		X		X		X									
	RumbleStone®																				X	

x = Available in both Thick and Thin 0 = Available Thick Pavers ONLY

Note: Thick and thin pavers are manufactured at different facilities, colors are not guaranteed to match.

X Part of the **5Products - 5Colors - Priority Stock Program**

X 3,000 Square Foot Minimum

Due to expected variations of the natural raw materials used in the production of these products, minor shade variations may occur between samples including material samples, photography, printed images, computer images and orders. Please make your color selections from the actual samples. Check with your Flagstone representative for shapes and sizes available in solid and premium colors.



COLOR GUIDE

Blended White Cement Based Colors



Cream / Beige



Cream / Beige / Charcoal



Cream / Tan



Cream / Orange / Brown



Cream / Orange / Pewter



White / Pewter



White / Tan / Charcoal



White / Tan

Due to expected variations of the natural raw materials used in the production of these products, minor shade variations may occur between samples including material samples, photography, printed images, computer images and orders. Please make your color selections from the actual samples. Check with your Flagstone representative for shapes and sizes available in solid and premium colors.





Blended Gray Cement Based Colors



Gray / Charcoal



Indian Summer



Tan / Charcoal



Red / Charcoal



Red / Tan / Charcoal

Solid Gray Cement Based Colors



Charcoal



Pewter



Tan

Solid White Cement Based Colors



Beige



Cream



White



Heritage in White / Pewter, Random Pattern

Manufactured by:

FLAGSTONE  **PAVERS**[®]
QUALITY & STRENGTH INTERLOCKED

www.flagstonepavers.com

9070 Old Cobb Road
Brooksville, FL 34601
Phone: 352-799-7933
Fax: 352-799-6844

©2022 The QUIKRETE Companies - Patents Pending. • KHS - 04/22

QUIKRETE and its subsidiaries (collectively QUIKRETE) reserve the right to improve its products and make changes to its specification and design without notice. The information contained herein has been compiled by QUIKRETE and to the best of its knowledge, accurately represents Flagstone Pavers products and how it may be used in the applications which are illustrated. Site conditions, including load pressures acting on the wall, soil types and drainage conditions, may vary. Final determination of the suitability of the product for the use contemplated and the manner of product use are the sole responsibility of the user. Good construction practices and local building codes require the use of an engineered design when constructing retaining walls or free-standing walls in many conditions. Structural design and analysis should be provided by a qualified engineer.

NOTICE OF LIMITED WARRANTY: the terms of the Limited Warranty applicable to our products can be found at www.flagstonepavers.com or can be obtained by sending a written request to c/o FLAGSTONE PAVERS, 9070 Old Cobb Road, Brooksville, FL 34601.